

# SUNREEF 58

## Specification 2010/2011

### General Specification

<b>Length overall:</b>	18,28 m	60'
<b>Waterline length:</b>	17,77 m	58.3'
<b>Breadth overall:</b>	9,20 m	30.2'
<b>Lightship displacement (<i>composite</i>):</b>	22 T	48502 lbs
<b>Lightship displacement (<i>aluminium</i>):</b>	26 T	57320 lbs
<b>Draft maximum:</b>	1.60 m	5.2'
<b>Mast length:</b>	24 m	78.8'
<b>Fully battened main sail:</b>	110 m <sup>2</sup>	1184 ft <sup>2</sup>
<b>Spinnaker (<i>option</i>):</b>	230 m <sup>2</sup>	2476 ft <sup>2</sup>
<b>Gennaker (<i>option</i>):</b>	115 m <sup>2</sup>	1238 ft <sup>2</sup>
<b>Genoa:</b>	59 m <sup>2</sup>	635 ft <sup>2</sup>
<b>Solent (<i>option</i>):</b>	30 m <sup>2</sup>	323 ft <sup>2</sup>
<b>Storm jib (<i>option</i>):</b>	7 m <sup>2</sup>	75 ft <sup>2</sup>
<b>Main engines (<i>upgradable</i>):</b>	2 x 75 HP	2 x 75 HP
<b>Fuel capacity (<i>upgradable</i>):</b>	2 x 500 L	2 x 132 Gal
<b>Water capacity:</b>	2 x 390 L	2 x 103 Gal
<b>Number of people (<i>category A</i>):</b>	12	

### Construction

#### Standard:

- Hulls, deck, flybridge and all structural bulkheads constructed of glass/vynilester and polyester sandwich laminate
- Rudders constructed of a moulded sandwich glass/vynilester. Rudder stocks in aluminium alloy
- Aft platform

# SUNREEF 58

## Specification 2010/2011

### Rigging & Sails

#### Standard:

- Aluminum mast and aluminum boom
- Plastic protections on the shrouds
- Lazy jack
- Fully battened main sail made of Dacron 1<sup>st</sup> choice, cross cut, 2 reefs
- Genoa double pleated made of Dacron 1<sup>st</sup> choice

#### Options:

- Carbon mast with incorporated LEDs (*white finish*) a
- Carbon boom (*Park Avenue, white finish*) with lazy jack bag
- Fully battened mainsail tri-radial cut made of Hydranet
- Solent made of Dacron 1<sup>st</sup> choice, cross cut (*requires complete gear*)
- Solent, tri-radial cut made of Hydranet (*requires complete gear*)
- Genoa, tri-radial cut made of Hydranet
- Gennaker Polyester stormlite (*requires complete gear*)
- Complete gear for solent
- Complete gear for Gennaker
- Electric furling system for Solent and/or Genoa

### Mechanics

#### Standard:

- 2 complete engines 75 HP (Yanmar)
- 2 fuel tanks of 500 L each
- 1 engine speed controls (*at the helm station one on the flybridge*)
- 1 electric pump + 1 manual for each fuel tank
- Lights in the engine rooms

# SUNREEF 58

## Specification 2010/2011

### Mechanics

#### Options:

- Upgrade to 2 complete engines 110 HP (Yanmar) with direct stainless steel shafts
- Pair of 3-bladed folding propellers for the 110 HP engines (*requires engines 110 HP*)
- Additional set of engine throttles at navigation station in saloon
- 2 extra engine instruments at the navigation table
- 2 electric bow thrusters
- Extension of fuel tanks to 2 x 900 L

### Deck Gear

#### Standard:

- Bow pulpits with integrated teak seats
- Gangway
- Port lights
- Swim ladder on the skirts
- 4 Winches
- Blocks and jammers
- Genoa manual furler
- Deck light

#### Options:

- Main sail electric winch
- All 4 electric winches
- Manual dinghy launching system
- Electric dinghy launching system
- Bimini on the flybridge (*stainless steel*)
- Bimini windshield (*requires bimini*)
- Hydraulic gangway
- Rotating deck search-light
- 2 additional lights for the flybridge with separate switch

# SUNREEF 58

## Specification 2010/2011

### Options (*follow up*):

- 2 fresh water outlets at the bottom of the mast and in the cockpit
- 2 waterproof speakers on the flybridge and/or in the cockpit
- LEDs in skirts' stairs, cockpit and flybridge

### Steering system

#### Standard:

- Rudders constructed of a moulded sandwich lamination glass/ vynilester
- Self-aligning lower and top bearings
- 5 strokes steering wheel (*diameter 1000 mm*)
- Hydraulic steering system
- 2 emergency tillers

### Electrical systems

#### Standard:

- AC-230V: Main switchboard, Charger (75A) / inverter (2500W) 24V, Shore power inlet (*32 A inlet*), Shore power cord (*1 x 20m 3-cond*), Wiring (*special marine quality*)
- DC-24V: Main switchboard, 4 house batteries (24V/400Ah), 2 starting batteries (12V/85Ah), DC distribution, Wiring (*special marine quality*)

#### Options:

- Additional upgrade of electrical kit:
  - AC -230V: Main panel extension, 2 chargers (24V/75A), Inverter (24V/5000W), Additional 220 V socket in cabins, saloon and galley
  - DC -24V: Main panel extension, Battery monitor BTM, 8 house gel batteries (24V/800Ah), 2 starting gel batteries (12V/120Ah), Ivo compact 12V/25A
- 110V shore connection kit: Voltage selector 110/230 VAC (*with soft start*), Isolation transformer 10 KVA, selector switch 50/60 Hz
- 2 alternators 24V/110A
- Generator 19 KVA, 220 Volts

# SUNREEF 58

## Specification 2010/2011

### Lighting

**Standard:**

- Lighting with halogen lamps

**Options:**

- Domotic system for lights control, including dimmers for ceiling lights
- Optical fibres lights in the cockpit (*effect of "ciel étoilé"*)
- Underwater lights (*Xenon*)

### Navigation & electronics

**Standard:**

- Compass (*size 135mm*)
- Chronometer and barometer

**Options:**

- Electronic pack 1: 2 multifunctional 8" displays 6-series (*Garmin*), GPS, Radar 4kW, autopilot with gyrocompass and 2 pilot control heads, 4 universal displays for speed, depth and wind display, VHF with DSC function
- Electronic pack 1: 2 multifunctional 15" touch screens 7-series (*Garmin*), GPS, Radar 4kW, autopilot with gyrocompass and 2 pilot control heads, 4 universal displays for speed, depth and wind display, VHF with DSC function
- Connection between navigation instruments and PC
- Fishfinder
- Display duplicate on the saloon TV
- Wireless autopilot controller
- Yacht Controller (*remote controller for engines, windlass and bow thrusters - optionally*)
- External camera with colour and night vision
- Satellite communication KVH V7

# SUNREEF 58

## Specification 2010/2011

### Plumbing

#### Standard:

- Fresh water : 2 x 390 L equipped with level indicators, Pressurized pump with stainless steel tank , 2 water heaters of 60 L each
- Black water : 2 x 88 L tanks with gravity discharge system equipped with 3 way valves (*discharge in the sea or holding tanks*)
- 4 electrical bilge pumps
- 2 manual bilge pumps
- 2 hand showers on deck

#### Options:

- Watermaker 60 L/h – 24V or 220 L/h – 220V
- Electric toilets 24V in bathrooms with fresh water flush (*silence version*)
- Sea water pump for washing the deck

### Comfort on board

#### Standard:

- Gas oven
- 4-burner stove
- Refrigerator / freezer 221 L (220V) in the galley

#### Options:

##### Generalities:

- Curtains on all windows and port lights
- All manually recessed Skyscreen blinds
- Electrically recessed Skyscreen blinds in the saloon (*manual in the cabins*)
- Manually concealed Skyscreen with anti-mosquito screens on cabin ceiling hatches
- Fitted forepeak (*with bed*)
- Fitted forepeak with toilet, shower and sink (*without bed*)

##### Electrical appliances:

- Air conditioning installation in the saloon, galley and cabins: 60000 BTU
- Ventilator set in each cabin, in the galley and on the deck
- Washing machine / dryer with complete installation

# SUNREEF 58

## Specification 2010/2011

### Electrical appliances *(follow up)*:

- Dishwasher with complete installation
- Stainless steel microwave with oven and grill function
- Electric oven instead of gas *(requires upgraded generator)*
- Cooker hood
- Ice maker
- Wine cooler for 32 bottles

### Leisure items:

- Widescreen LCD TV in the saloon *(32" or 40")*
- Hi-Fi Pack (Harman/Kardon) in saloon
- LCD TV 20" + DVD/CD player in cabin
- Satellite TV antenna
- TV antenna
- Safe
- Electric diving compressor 6 m<sup>3</sup>/hour and 6 diving bottles holder
- 

### Finishing

#### Standard:

- Furniture and all interior panels made of individually selected wood of category A with mat polyurethane varnish
- All upholstery and cushions made of synthetic fabric
- Hull, deck, cockpit and flybridge in white or coloured gelcoat

### Finishing

#### Options:

- Wood finished with mat polyester lacquer instead of mat polyurethane lacquer
- Wood finished with gloss polyester lacquer instead of mat polyurethane lacquer
- Upgrade of wood from category A to category B
- Upgrade of wood from category A to category C
- Interior upholstery and cushions in skaï instead of synthetic *(needs design fee)*
- Box for the Hi-Fi equipment with additional shelves *(needs Hi-Fi Pack)*
- Side of hulls painted in colored gelcoat
- Teak toe rails along deck sides

# SUNREEF 58

## Specification 2010/2011

### Options *(follow up)*:

- Cockpit, flybridge and skirts covered with teak
- Deck covered with teak with installed flush hatches

### Launching (options only)

- Antifouling *(with Epoxy primer)*
- Launching and setting of the mast
- Name and hailing port inscriptions
- Polish export fees
- Sunreef representative on board for 3 days till Kiel Channel – qualified engineer / sailor, 1 person *(including crew training, first oil and filter change, and return costs)*
- Sunreef representative on board for 10, 20 or 30 days – qualified engineer / sailor, 1 person

### Safety equipment (options only)

- Complete safety equipment pack : 2 life rafts for 6 people, Rescue equipment *(12 lifejackets, first aid kit, flares, lifebuoy, signaling mirror, wooden plugs, flag set, fog horn)*, Set of fire extinguishers
- Adaptation to the MCA regulations for category 2
- Automatic fire extinguishing system in the engine rooms *(included in MCA adaptation)*
- Gas detection system + alarm *(included in MCA adaptation)*
- EPIRB *(included in MCA adaptation)*
- Man overboard system *(included in MCA adaptation)*
- Additional lifetags for man overboard system *(requires man overboard system)*
- Satellite tracking system with optional movement detection and anti-intrusion alarm *(excluding fees)*



# SUNREEF 58

## Specification 2010/2011

### Mooring & tools

#### Standard:

- Windlass 2500 W 24V
- Anchor 40 kg FOB + 80m galvanised chain (*diameter 13mm*)
- Additional anchor 20kg + 20m galvanised chain (*diameter 10mm*)

#### Options:

- Mooring kit (*8 fenders + 4x20 m mooring ropes*)
- 50 m tow line (*diameter 20 mm*)
- Anchor 40 kg CQR instead of FOB
- Toolbox
- Shroud cutter

### Spare parts (options only)

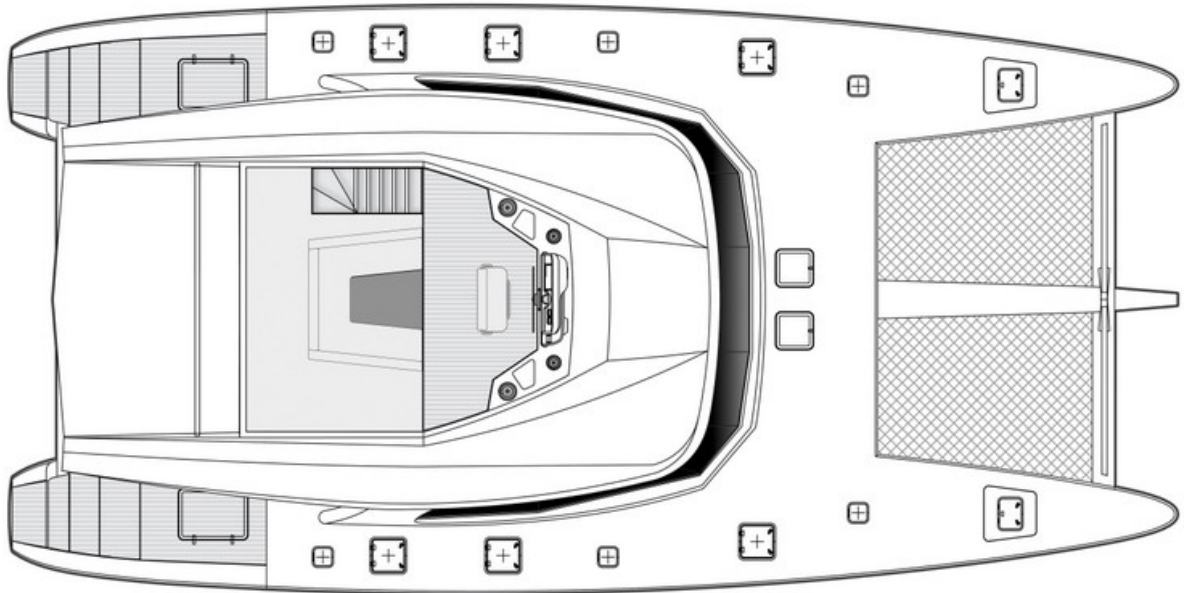
- Basic set of spare parts for engines and generator

# SUNREEF 58

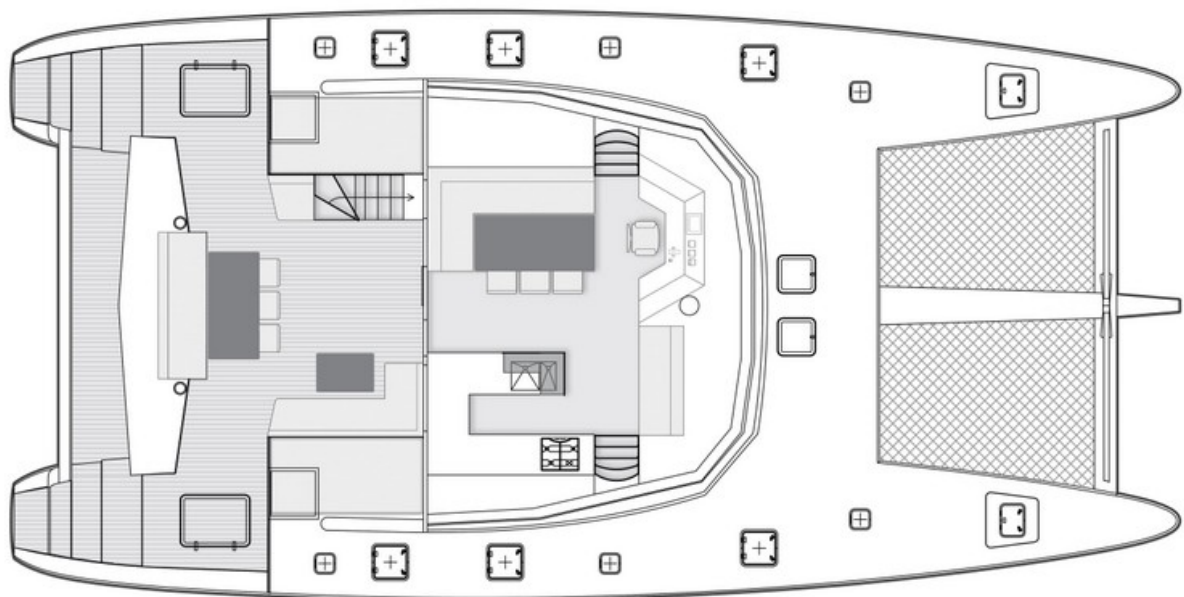
## Specification 2010/2011

### Accomodation

#### Flybridge:



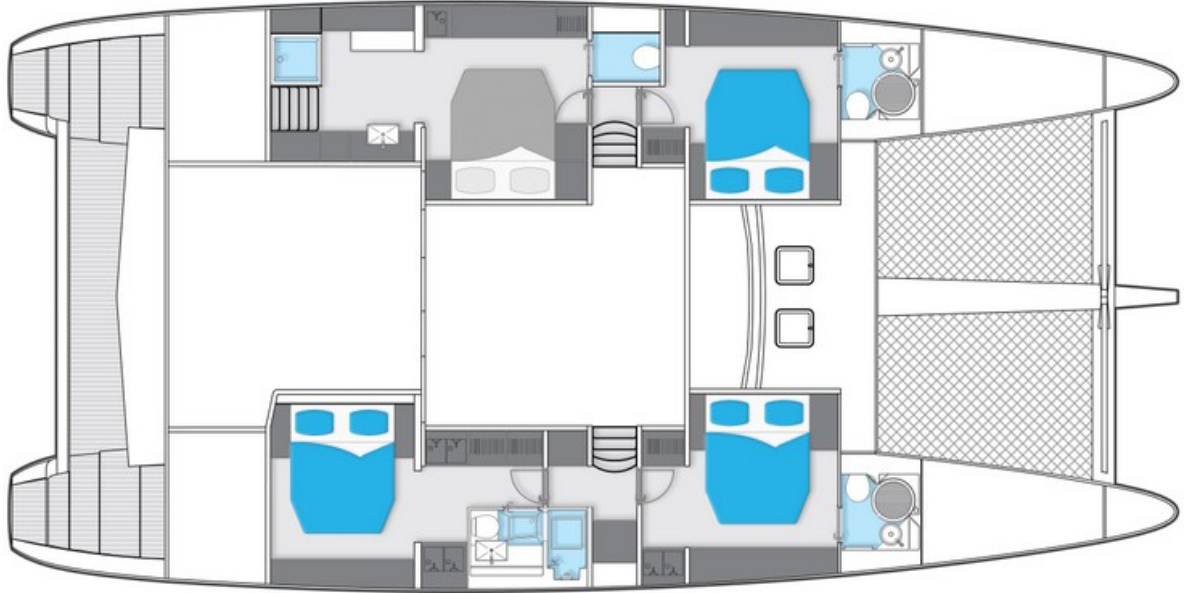
#### Saloon and cockpit:



# SUNREEF 58

## Specification 2010/2011

### Owner version:



### Charter version:

